



TK International
020 7794 8700
www.t-k.co.uk

Residential Sales
Residential Lettings
Property Management

Sales Office:
9 Heath Street
Hampstead
London NW3 6TP
E: sales@t-k.co.uk

Lettings Office:
16-18 Heath Street
Hampstead
London NW3 6TE
E: lettings@t-k.co.uk

tk.international
TK International
TK International

Est.
1998



North End Avenue Hampstead NW3

Quietly located within a bucolic setting at the top of a secluded shared private drive immediately abutting the green open spaces of Hampstead Heath, an enchanting and substantial semi-detached five/six bedroom period house which offers generous accommodation over four floors and set within grounds of 0.3 acres.

The house offers a good balance of bedrooms versus reception rooms plus a particularly large kitchen/family room and a drawing room leading in to a large conservatory extension which in turn leads directly onto the mature lawn garden.

The property has been maintained to a good standard by the present owners who have been sympathetic to the period nature of the house in how they have decorated it and in the finishes and materials used. It may be that an incoming owner may wish to update it and put their own decorative stamp on the house.

In addition to the above the property provides a triple length garage plus off street parking for another 4-5 cars. We understand from the present owner that they have received planning consent in principle to convert the garage into a habitable three bedroom guest cottage. Confirmation of full planning consent will need to be sought from the local authority.

£4,999,000

Freehold









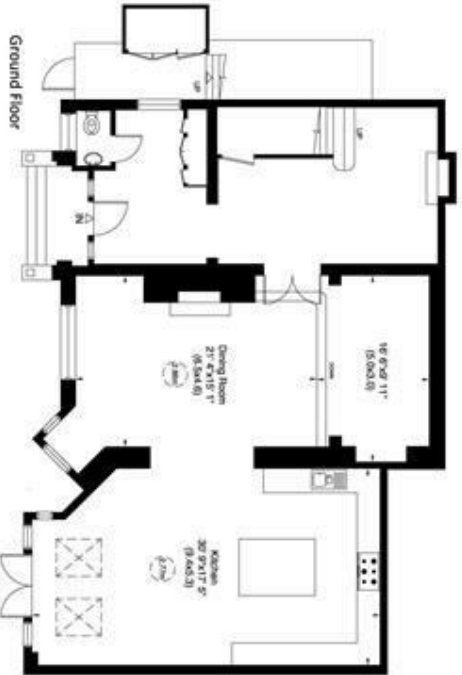




Northstead North End Avenue, NW3

Gross internal area (approx.)
 465 Sq m (5001 Sq ft) including Under 1.5m and Garage
 400 Sq m (4306 Sq ft) Excluding Under 1.5m and Garage
 Garage - 58 Sq m (624 Sq ft)
 For identification only. Not to Scale

0203 801 7722



Bedroom level height below cpm

Northstead North End Avenue, NW3

Site Plan
02/23/14 Approval
for Amendment only, not to scale
Copyright © 2014 NW3 LLC

